

Specification

Dual Linear, Multi-Bands 600-960MHz, 1400-2690MHz, 2690-3300MHz, 3300-6000MHz, Max Gain 9.5dBi,

Electrical specification

Port 1: Frequency (MHz)	600-960	1400-2690	2690-3300	3300-6000
Port 2: Frequency (MHz)	600-960	1400-2690	2690-3300	3300-6000
Polarization	Dual Linear V&H			
Peak Gain (exclude cable loss)	6.0dBi	9.0dBi	7.0dBi	9.5 dBi
Peak Gain (with 5m Cable)	5dBi	5.5dBi	4.5dBi	5.1dBi
VSWR, typ	<2.0	<1.8	<1.5	<1.4
Efficiency (with 30cm cable)	65% ~ 88%	73% ~ 92%	85% ~ 93%	89% ~ 99%
Efficiency (with 5m cable)	35% ~ 66%	41% ~ 53%	38% ~ 40%	25% ~ 40%
Nominal Impedance	50 Ohm			
Isolation (typ)	>12dB	>21dB	>24dB	>28dB
Max Power	20 Watts			

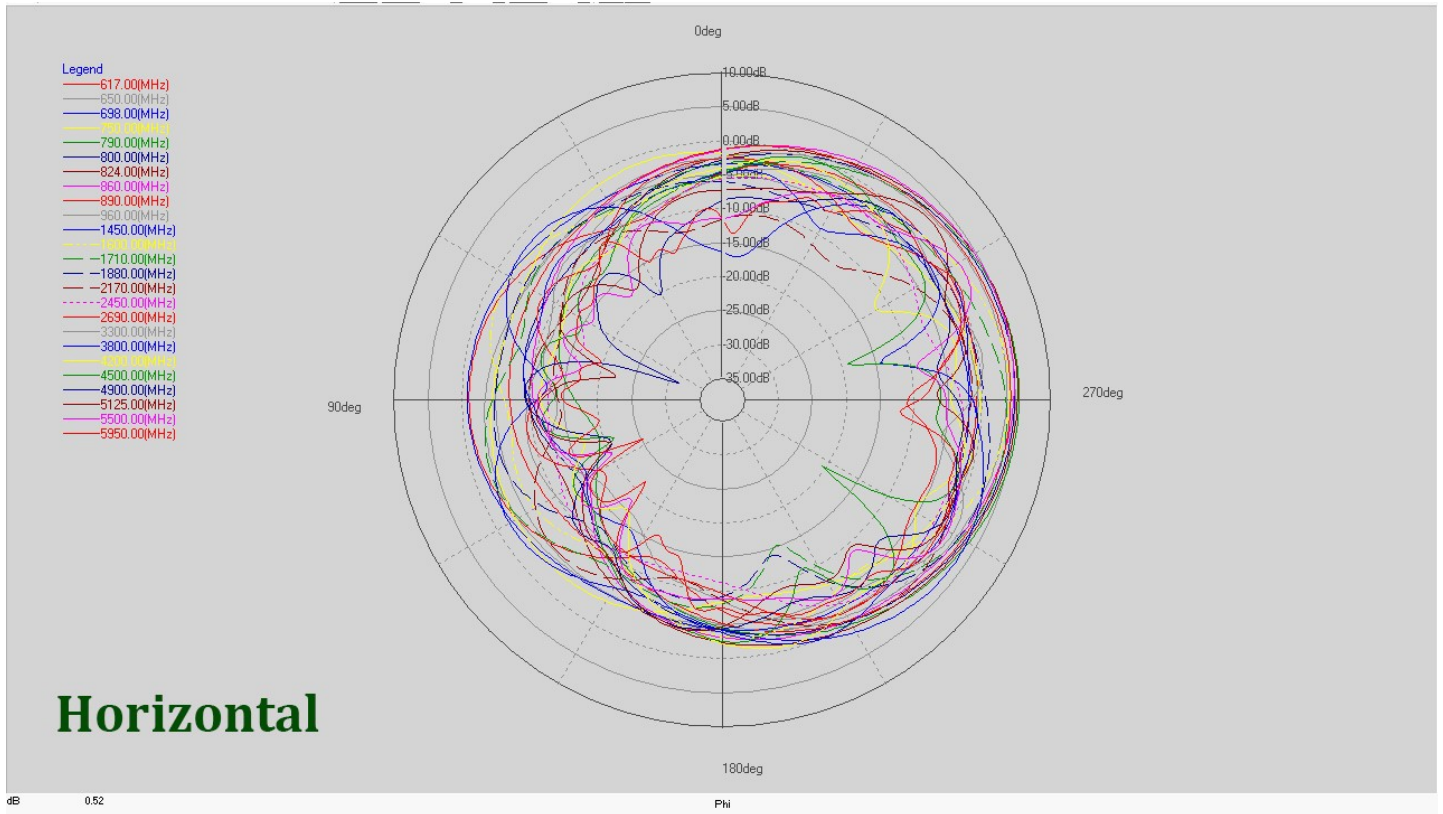
Mechanical specification

Connector	SMA Male x 2 / N-female x 2
Radiator Materials	Brass
Radome	ABS/ASA UV, color: white
Cable	Low Loss Cable, 5m, 8m
Weight	1.2kg (Incl Mount Kit and 5m cable)
Ingress Protection	IP65
Dimension	207x170x45mm
Material Compliance	RoHS Compliant
Operational Temperature	-30°C to +70°C
Storage Temperature	-40°C to +85°C

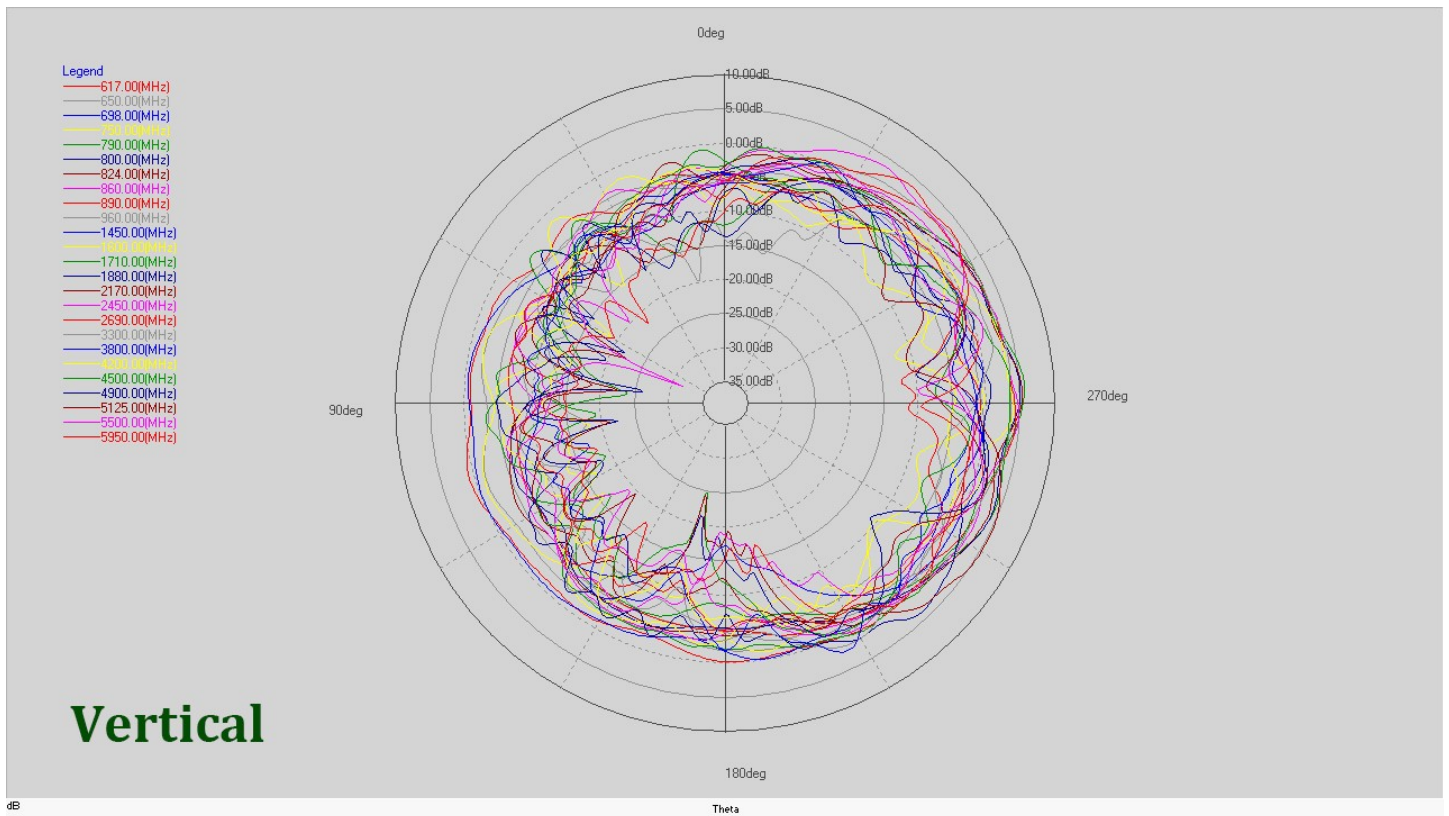


Radio Pattern, measured with 5m Cable

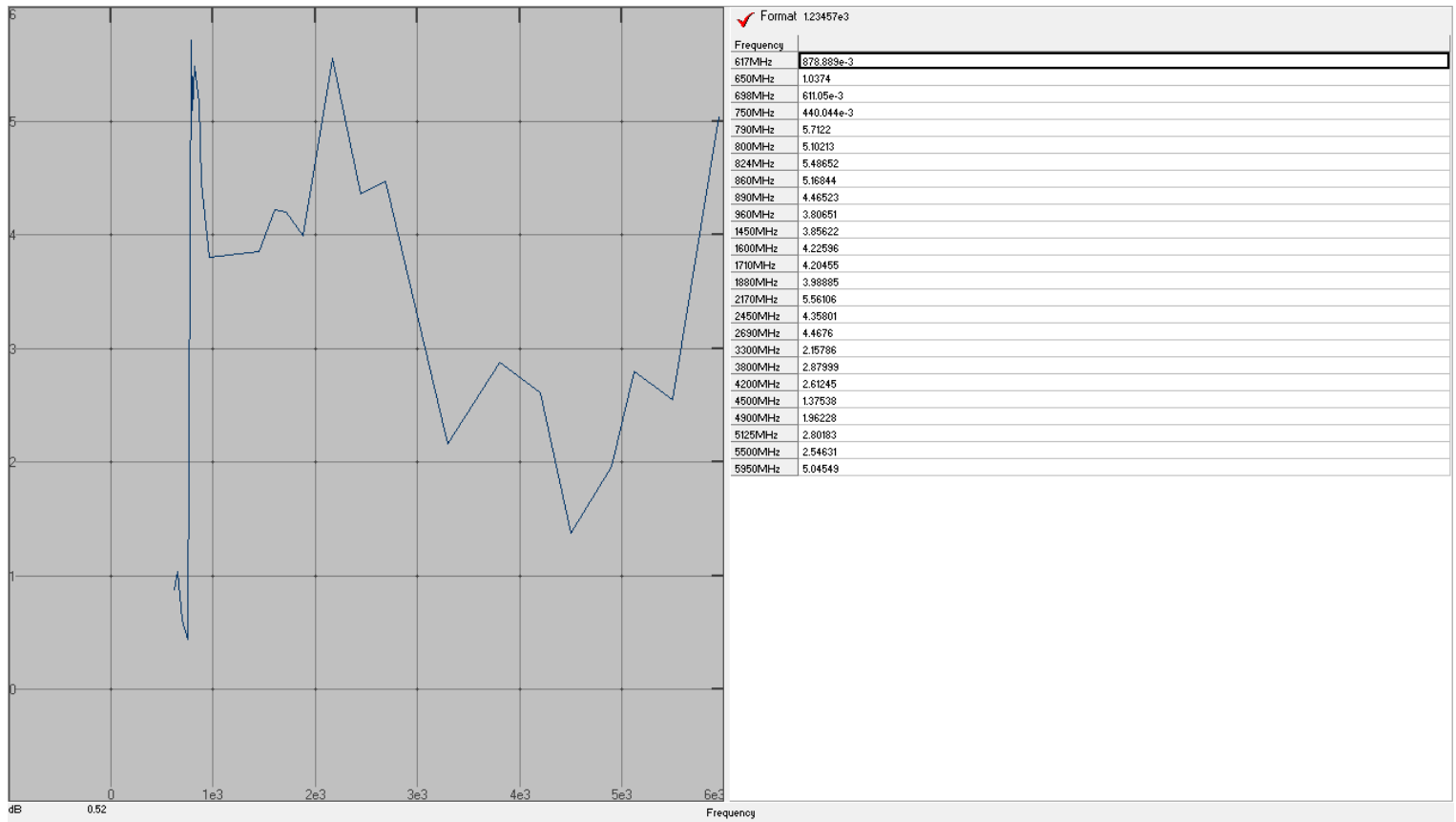
2D Horizontal =X-Y Plane



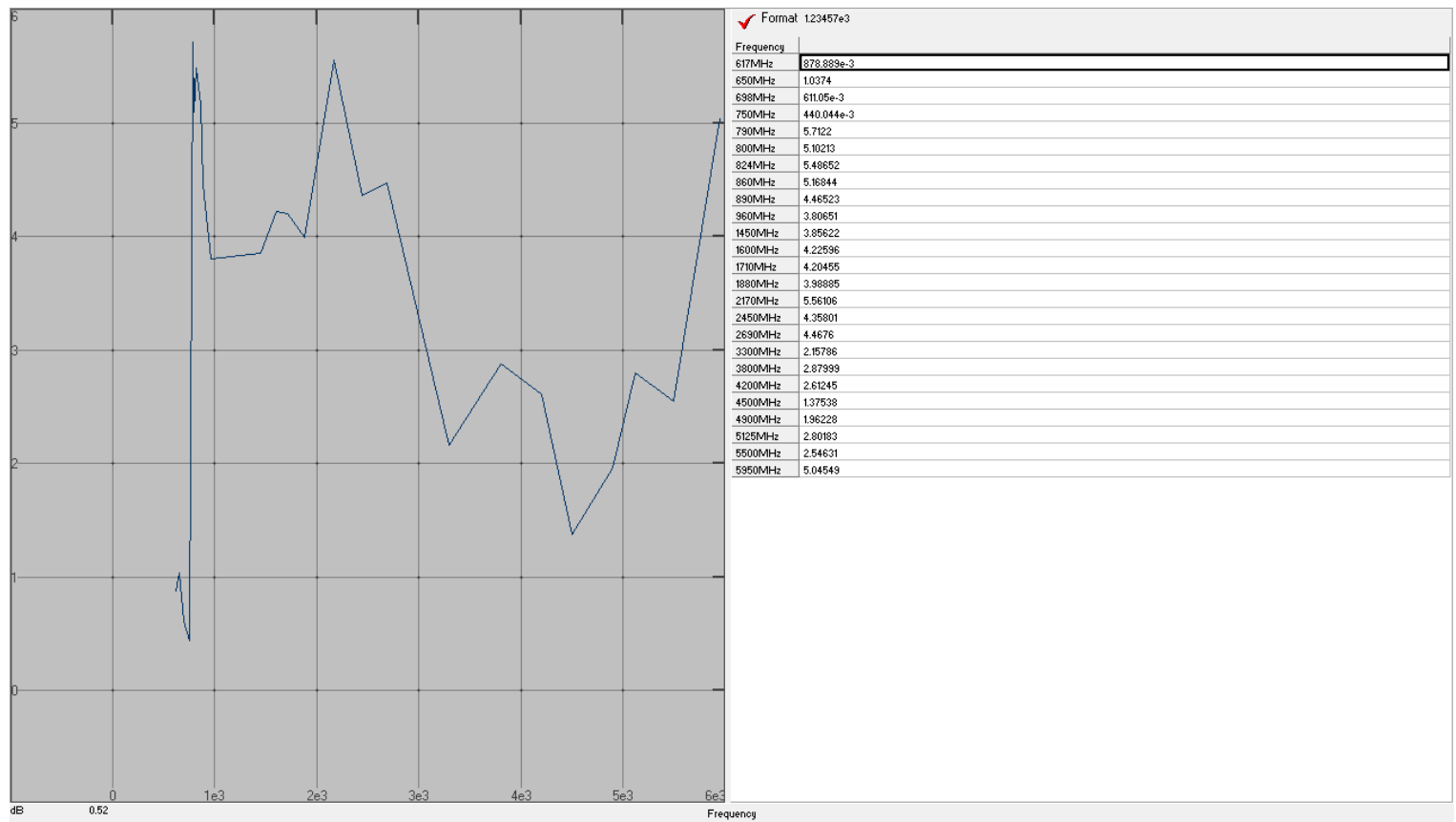
2D Vertical =X-Z Plane

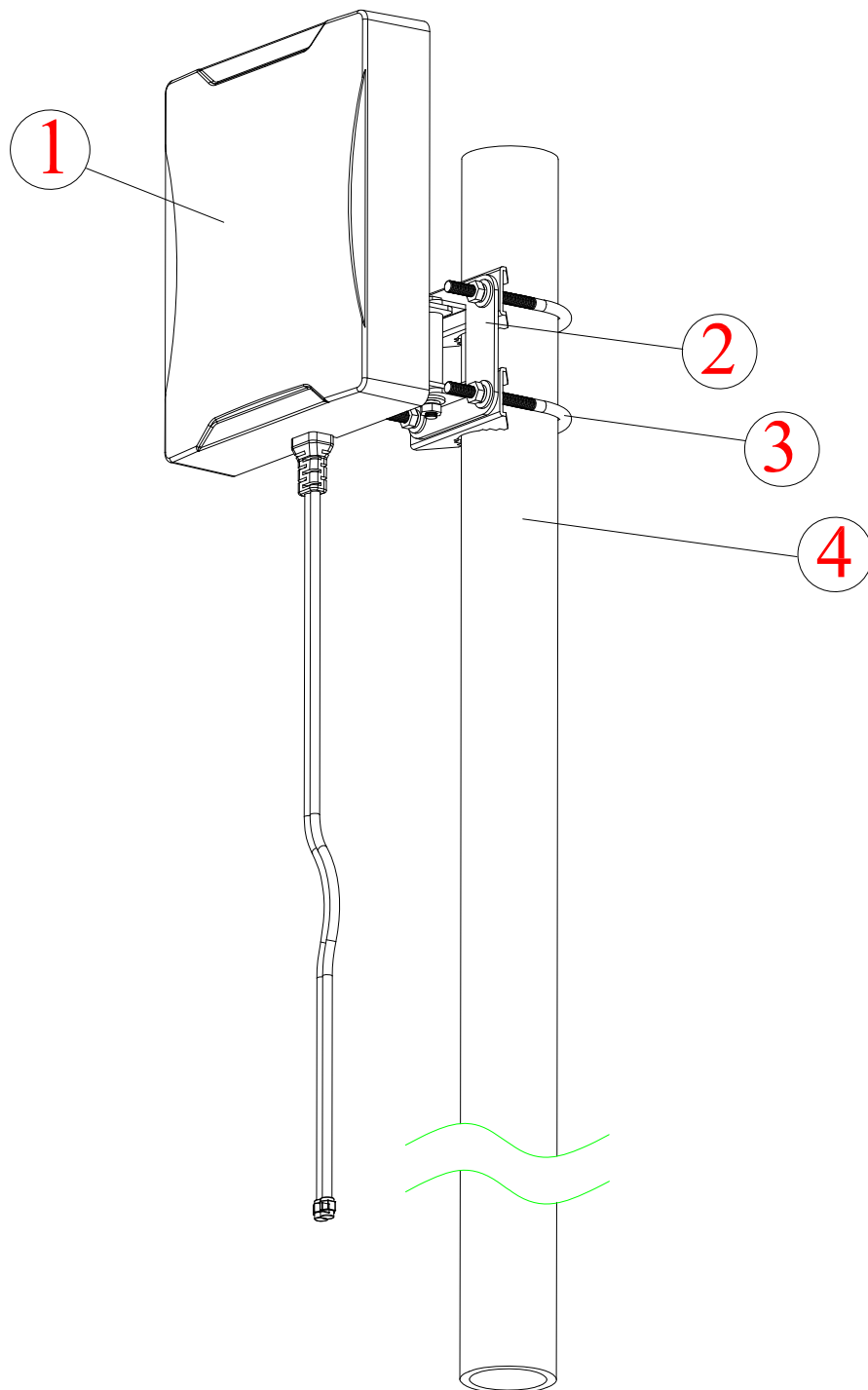


Gain list, measured with 5m Cable



Efficiency, measured with 5m Cable

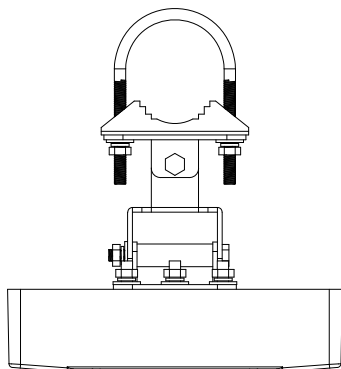
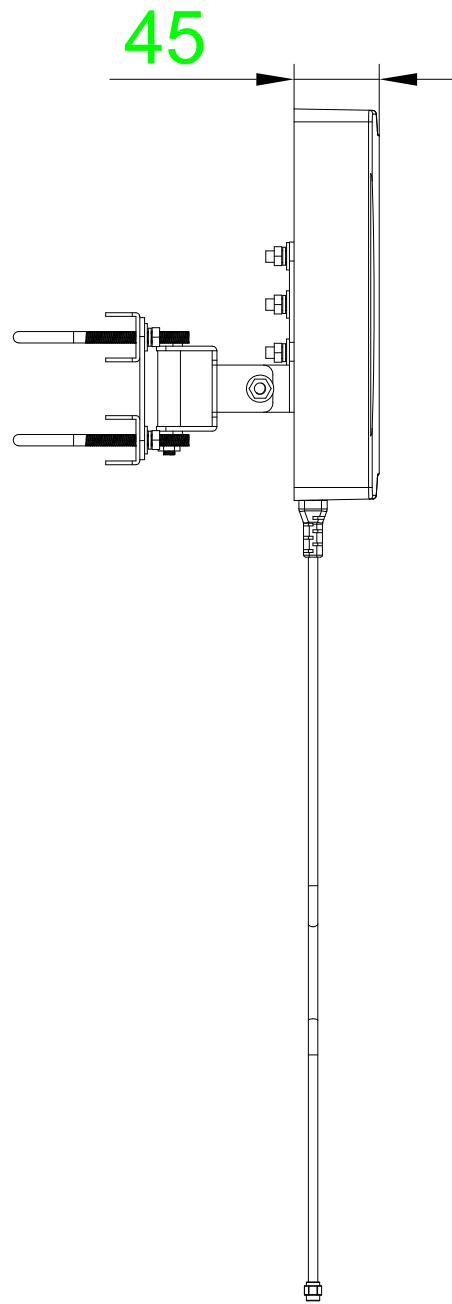
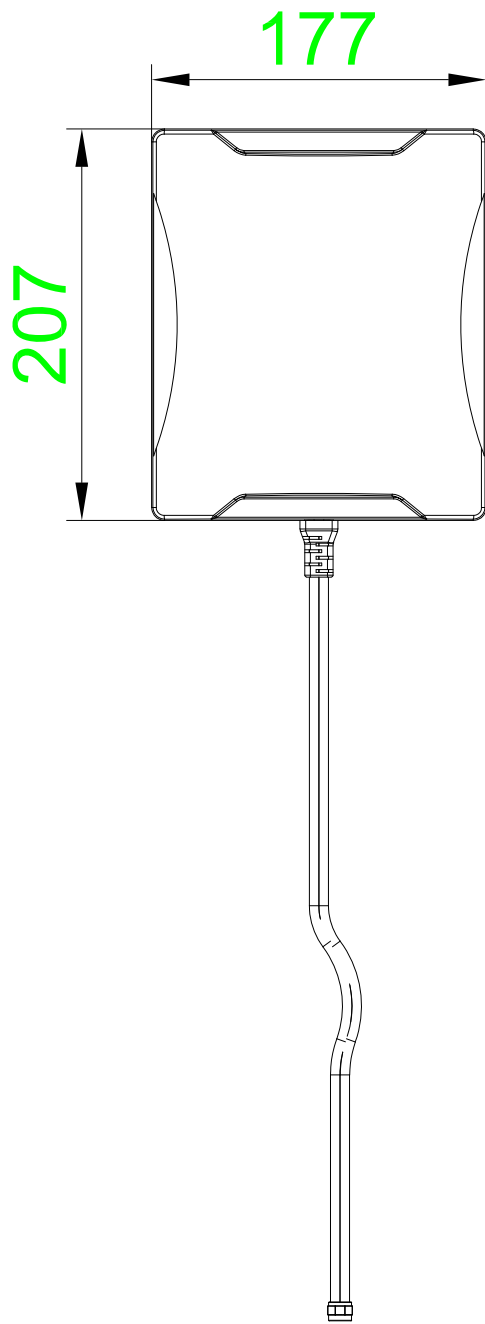


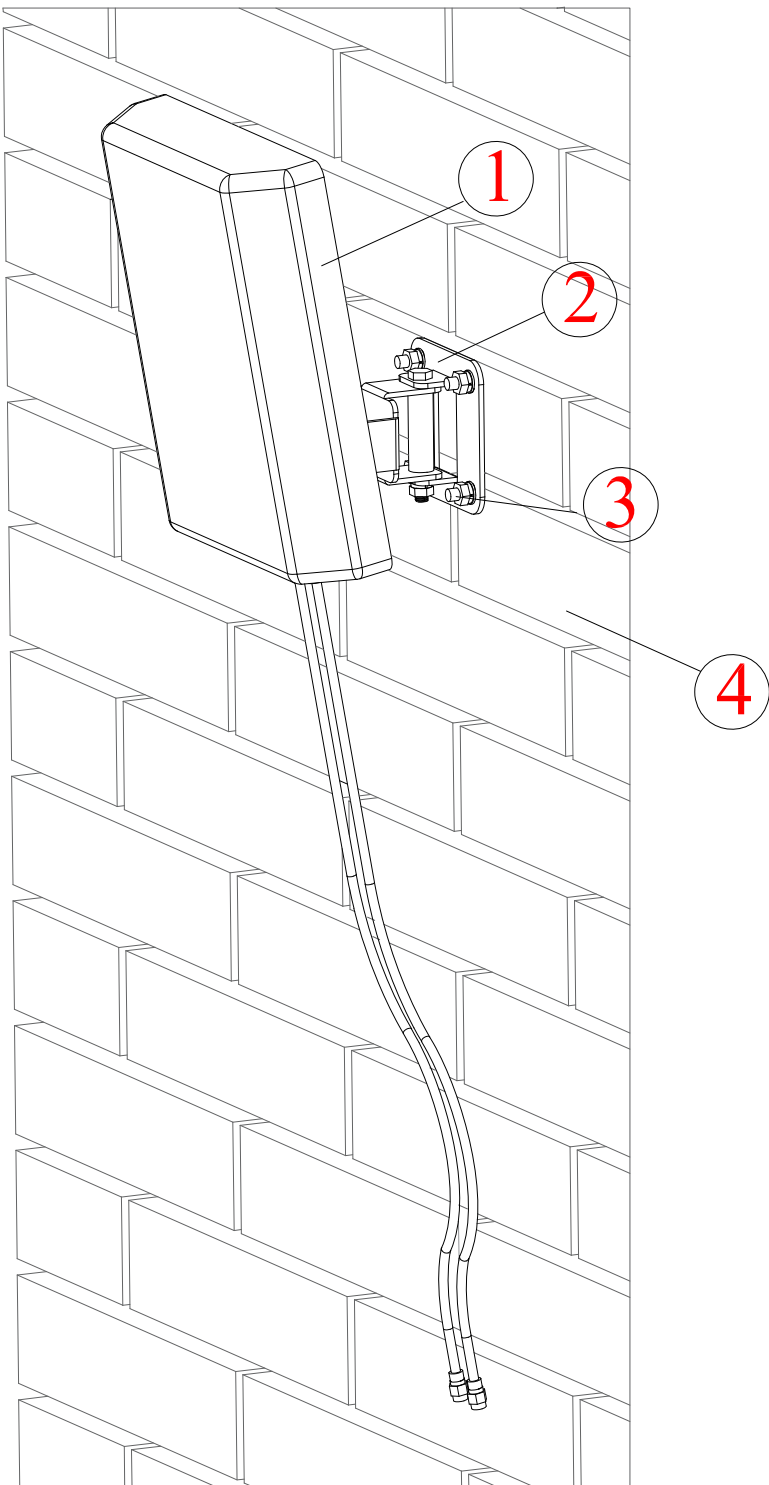


Pole Mounting with a supplied Adjustable Mount, 2pcs of U-bolts

- (1) Secure the Adjustable Mount with the Antenna
- (2) Attached the Mount to a Tubular Pole (dia:30mm ~ 45mm) with the 2pcs of U-bolts
- (3) Adjust the tilt angle, and srew tight to keep it in position

Unit:mm





Wall Installation

- 1.. Antenna
2. Adjustable Mount Kit
3. Frame Anchor
4. Solid Wall

with a supplied Adjustable Mount, 4pcs of M6x60 Frame Anchor

- (1) Secure the Adjustable Mount with the Antenna
- (2) Drill 4 holes in Solid Wall with Diameter: 9mm and Deepness: 50mm
- (3) Install the Mount to the wall with 4pcs of Frame Anchors
2. (4) Adjust the tilt angle, and screw tight to keep it in position